

KI Lösungen für den modernen Arbeitsplatz

Christian Richter

Infotechday, Geinberg, 19.11.2024



A satellite view of Earth at night, showing city lights and a dark sky with stars. The image is a composite of two horizontal panels. The top panel shows the dark, curved horizon of the Earth against a black sky filled with small white stars. The bottom panel shows the Earth's surface at night, with a dense pattern of bright yellow and orange lights representing cities and urban areas. The lights are most concentrated in the lower-left and lower-right quadrants, with some scattered lights in the center. The overall color palette is dominated by deep blues, blacks, and bright yellows/oranges.

The new era of AI

Rate of disruptive technology adoption



75% of
knowledge
workers use
AI at work

Source: 2024 Work Trend Index Annual Report from Microsoft and LinkedIn



A photograph of three women in an office environment. They are gathered around a laptop, looking at the screen. The woman on the left is smiling. The woman in the middle is looking at the screen with a neutral expression. The woman on the right is looking at the screen with a thoughtful expression, her hand near her chin. The background shows office desks, computers, and a whiteboard.

66% of
leaders
would not
hire without
AI skills

Source: 2024 Work Trend Index Annual Report from Microsoft and LinkedIn



AI work is more personal than ever

Insights driven
decisions vs.
cumulated data

Creativity for all
vs. design
expertise

Natural language
understanding
vs. keyboard

From personal computing to personal companion

To create a future where
everyone is (super) powered
to make a **meaningful**
impact through their work.

HP strategy Capitalizing on AI

1 AI FOR COMPANIES

Deploying and tuning LLMs with **AI SW libraries and WKS** and Managing employee PC experience with **Workspace Experience platform**

2 AI FOR PLACES

Reimagining the places and spaces where work gets done with **Poly Rooms & Peripherals**

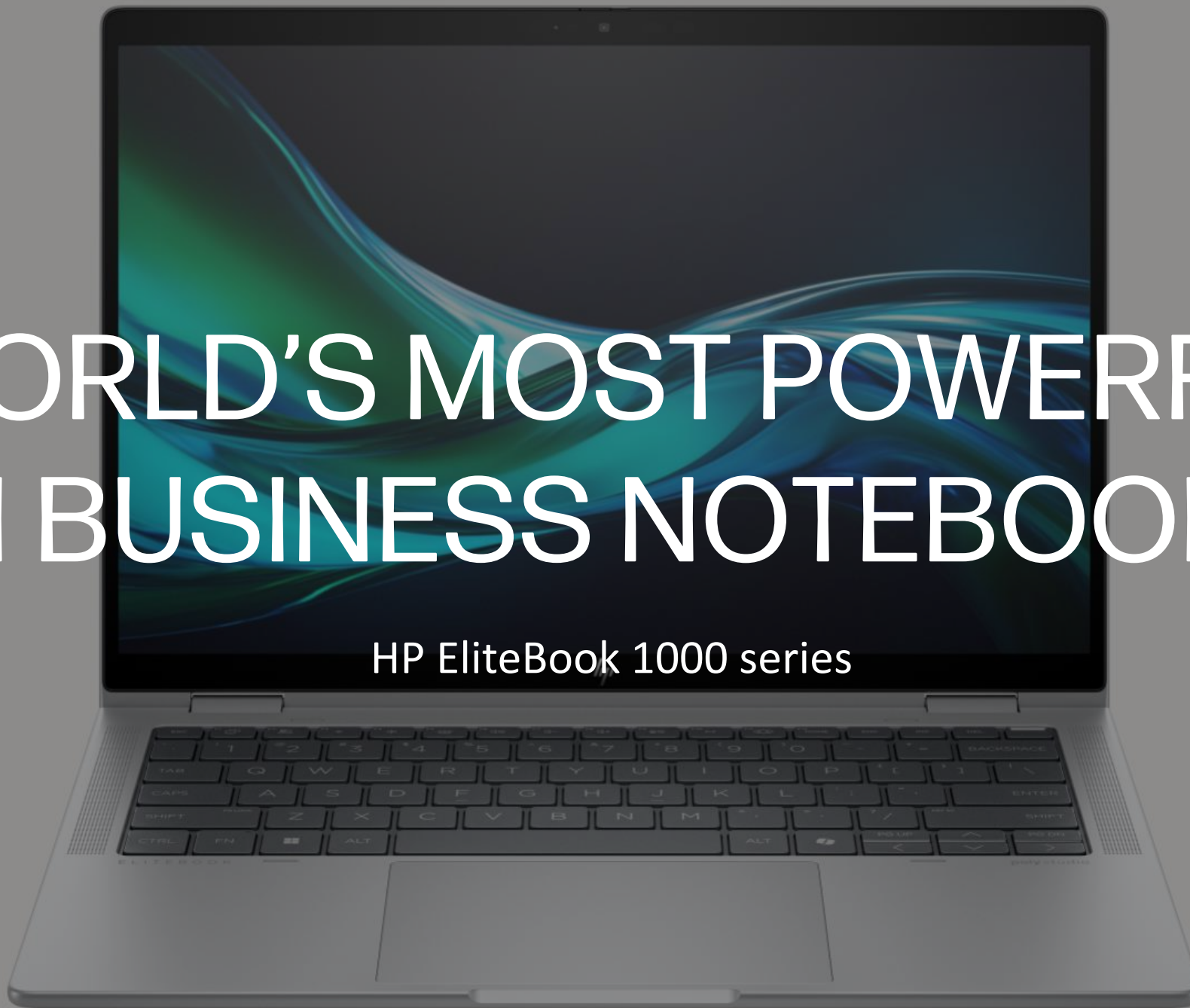
3 AI FOR PEOPLE

Empowering people to thrive in work and life by enabling secure local inferencing with **HP AI PC & AI solution's**



WORLD'S MOST POWERFUL AI BUSINESS NOTEBOOKS

HP EliteBook 1000 series



HP's AI makes you look and sound better than ever

- HP Poly Studio audio tuning for crystal-clear meetings
- NPU-powered Windows Studio Effects¹³ for real-time AI enhancements



Background effects such as background blur



Eye contact compensates for eyes looking at the screen instead of the camera



Automatic framing automatically zooms and crops as you move around



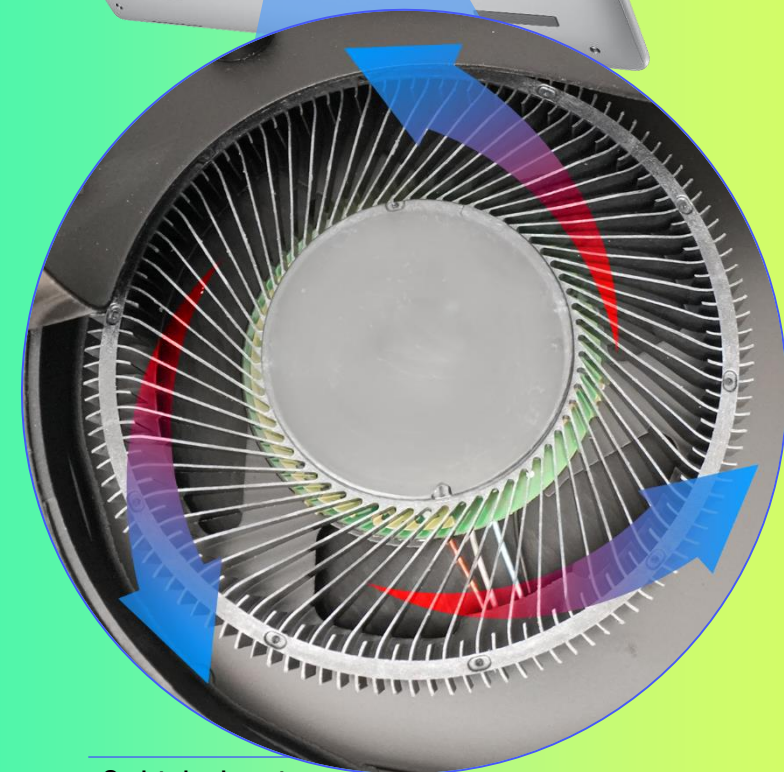
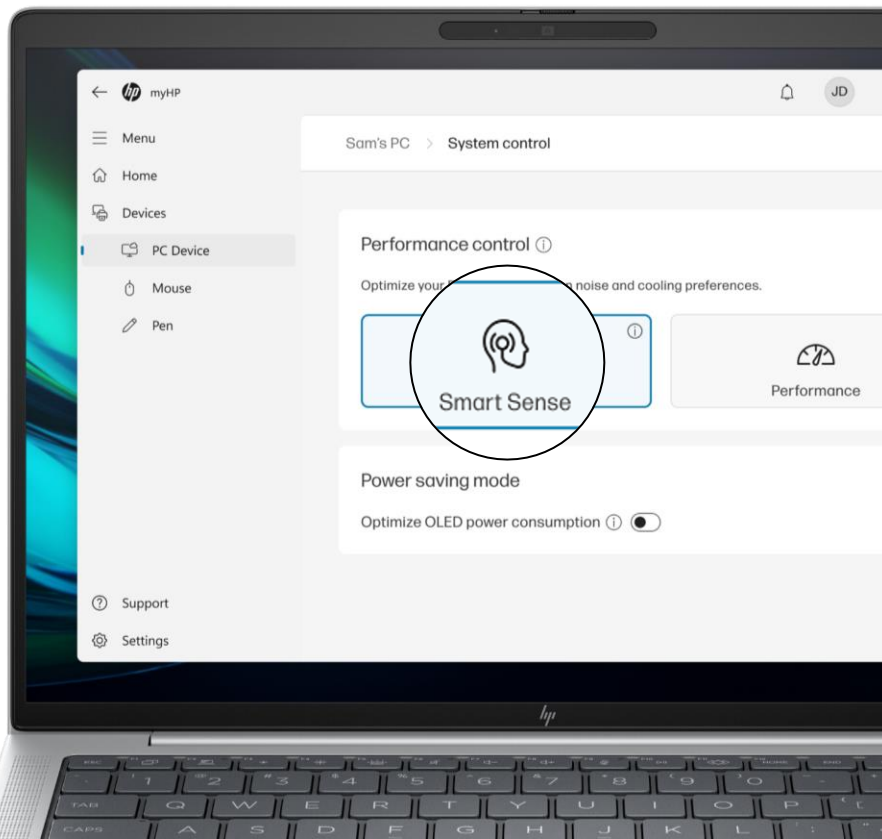
HP's AI transforms the power of your PC



With HP Smart Sense⁹

Up to **40% quieter**⁷

At least **40% improved performance**⁸



2x high-density turbo fans

HP's AI thinks about your battery, so you don't have to




- Manage battery performance with AI-enabled Battery Health Manager now in myHP¹⁰
- AI optimizes your battery life around your work schedule with Intelligent Hibernate¹¹
- Hands-free logging in and locking out with Instant On + Auto Lock and Awake¹²

Up to
21 hours
battery life¹⁹

Up to
29 hours
video playback
battery life²²



World's first business PCs to protect firmware against quantum computer hacks.⁵



HP Endpoint Security Controller⁶
A physically isolated, dedicated security microprocessor that protects the BIOS.



HP WOLF SECURITY



What does it mean for me?

1

More performance

to drive local model inferencing through NPU

2

More personalization

to optimize your device for the way you work

3

More security

to protect from not yet identified malware threats

THE HP AI HELIX

Next-Gen AI Compute

Next-generation devices
designed specially for AI



Copilot

AI is a journey... that starts today



HP EliteBook X G1a 12-core G1a 14" diagonal clamshell



HP EliteBook Ultra G1q 12-core

HP EliteBook Ultra G1q8 8-core

HP introduces first commercial AI PC Portfolio

- Business laptops enhanced by AI
- 14 AI PC models from the 400 to 1000 G11 series⁹



X Series

For tech-forward innovative thinkers who push the envelope and need ultimate power, performance, and security.

Ultra Series

Intentionally designed to optimize the use of AI, enabling innovators to thrive in the new era of AI



AI PCs <40 TOPS NPU^{8,10}

 Next-Gen AI PCs with 40+ TOPS NPU^{8,10}

 Copilot+PC⁷

 AI Companion¹¹



HP Confidential. For use by HP or Partner with Customers under HP CDA only.

Built to be long-lasting

Built to manage anywhere

Business-ready next-gen AI PC

HP EliteBook Ultra G1q



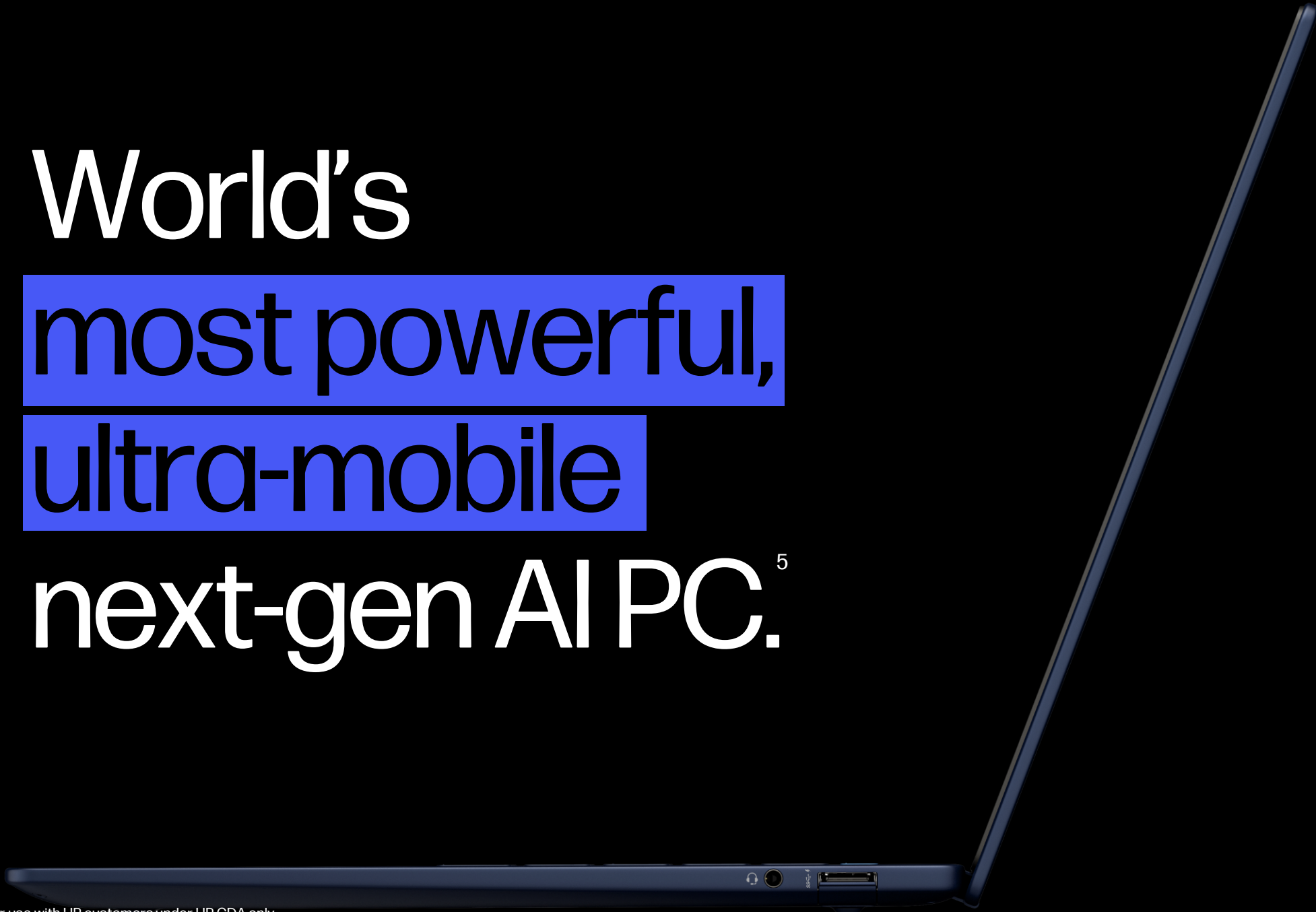
Built to be enterprise secure

Built to stand out in style



HP Confidential. For use with HP customers under HP CDA only.

World's
most powerful,
ultra-mobile
next-gen AI PC.⁵



Product highlights



HP EliteBook Ultra G1q8 HP EliteBook Ultra G1q

Work inspired from anywhere
with a PC designed to optimize
the potential of AI.

Productivity

- **Qualcomm® Snapdragon® X Elite Platform** 12-core CPU^{3,23}, or **Qualcomm® Snapdragon® X Plus Platform** 8-core CPU^{3,23}
- **Take on AI workloads faster** with 45 TOPS NPU²³
- **Personalize your AI experience** by asking it to use your personal files for quick answers and generative AI content with **HP AI Companion**³⁸
- **16GB LPDDR5x** Memory on 8-core or up to **32GB LPDDR5x** on 12-core²²
- **Enjoy an ample view** with a 2.2k (2240x1400) WLED low blue light touch display⁵
- **Lower power consumption with max performance** in a 59Whr⁶ battery

Security

- Browse the web with confidence while protected by **HP Wolf Pro Security NGAV**¹²
- Chip-to-cloud security with a **Microsoft Secure Core PC**²⁴ that includes **Microsoft Pluton Security**
- **Seamlessly lock PC** when you walk away with **Microsoft Presence Sensing**³²

Design

- **Built for mobility** at 14.4mm max height⁵² & under 3lbs⁷
- One-touch keyboard access to **Microsoft Copilot**⁸
- **Work with ease** on a large keyboard and clickpad
- New hinge design for **optimal thermal ventilation**
- From PC to packaging, **built with sustainability in mind**
- **Optional touch or non-touch** on 8-core⁵

Collaboration

- **Real time AI powered video optimization** with **Poly Camera Pro**^{11,40}
- **5MP + IR camera** that delivers a professionally tuned image to show true colors in high resolution
- **Fast internet speeds** with **Wi-Fi 6E**⁹ or **Wi-Fi 7**¹⁰



Charge forward while charging less

HP EliteBook Ultra G1q 14 inch Notebook AI PC

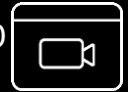
27

hours of local video playback⁵⁹



22

hours of Netflix streaming⁶⁰



20

hours of web browsing⁶¹



12

hours of Teams 3x3 video calls⁶²



The world's most sustainable PC portfolio welcomes Next Gen AI PCs.

21



Covers made from
**50% recycled
aluminum** ^{25, 47}



Keycaps made with
**50% recycled
plastic** ^{26, 47}



Speakerbox made with
**5% ocean-
bound plastic** ⁴⁶



100%
sustainably
sourced
packaging¹⁷



HP Confidential. For use by HP or Partner with Customers under HP CDA only.



Durable construction

Built to last

Undergoes
19

MIL-STD 810H tests¹⁸

120k
Hours

HP Total Test Process³⁰

The real challenge of building thin, light, and powerful is to remember where this device will be used: in a mobile environment.



Actual product may vary from product depicted.

World's most powerful Next Gen AI business notebook⁹⁸

HP EliteBook X G1a



HP Confidential. For use by HP or Partner with Customers under HP CDA only.



Reclaim your day

Turn days into hours, and noise into focus.

EXCLUSIVE TO HP

HP and AMD deliver a powerful
AMD Ryzen™ Pro processor¹
capable of up to

55,000,000,000,000

operations per second (TOPS)⁴⁹



HP Confidential. For use by HP or Partner with Customers under HP CDA only.

AMD
RYZEN AI

Product walkaround



Weight¹⁴
3.3 lbs
1.497 kg



Dimensions
312.2 mm (W) x 214.65 mm (D) x
9.22mm (front)/13.16mm (rear).

Maximum height 18.3mm

HP EliteBook X G1a Next Gen AI PC

Elite power and performance with AMD Ryzen AI processor and up to 55 TOPS NPU^{6,7}

Comfortable viewing with a 14" diagonal, 16:10 touch screen (option) display⁸ with low blue light

Stay protected with HP Wolf Security¹⁵

New hinge design for optimal thermal ventilation

Large keys and GS mark compliant & clickpad increase efficiency, productivity & comfort.

Look your best on video calls with a 5MP IR camera with 88° wide FoV and support for Windows Hello.

Long battery life (74.5Whr) in a 14" business notebook^{10,11}



Integrated Microsoft Copilot¹² key opens the prompt Window so your AI assistant is at your fingertips

Responsibly crafted with up to 80% recycled aluminum in the enclosure¹⁷. 100% recycled material in the packaging.



Clean and simple port configuration

HP EliteBook X G1a Next Gen AI PC

Actual product may vary from product depicted.



Thunderbolt™ 4 with USB Type-C®
40Gbps signaling rate
(USB Power Delivery, DisplayPort™ 2.1)

Kensington nano
lock slot

The world's most sustainable PC portfolio welcomes Next Gen AI PCs.

HP EliteBook X G1a 14 inch Next Gen AI PC

63



NEW Recycled material innovation



Heat plate made with 50% recycled copper¹⁷



Covers made with up to 80% recycled aluminum¹⁷



Keycaps made with up to 50% recycled plastic⁶⁰



Speakerbox made with 30% ocean-bound plastic⁵²



Bezels made with at least 20% recycled cooking oil⁵⁹



100% sustainably sourced packaging¹⁶



HP Confidential. For use by HP or Partner with Customers under HP CDA only.





Durable construction

Built to last

Undergoes
19

MIL-STD 810H tests⁶¹

120k
Hours

HP Total Test Process⁶²

The real challenge of building thin, light, and powerful is to remember where this device will be used: in a mobile environment.



HP Confidential. For use by HP or Partner with Customers under HP CDA only.





Onboard AI unleashes a

New Era of PC Experiences

Powerful new capabilities
for software providers

40+ AI Local Models in **Microsoft Copilot Runtime**
100+ New Available AI Models **Optimized for Qualcomm**

Incredibly Fast AI Experiences

Fast Stable Diffusion in <1 second

Personal and Private
as local data stays local

All Day Battery Life & Performance
even when using multiple AI features





Amplified with HP AI

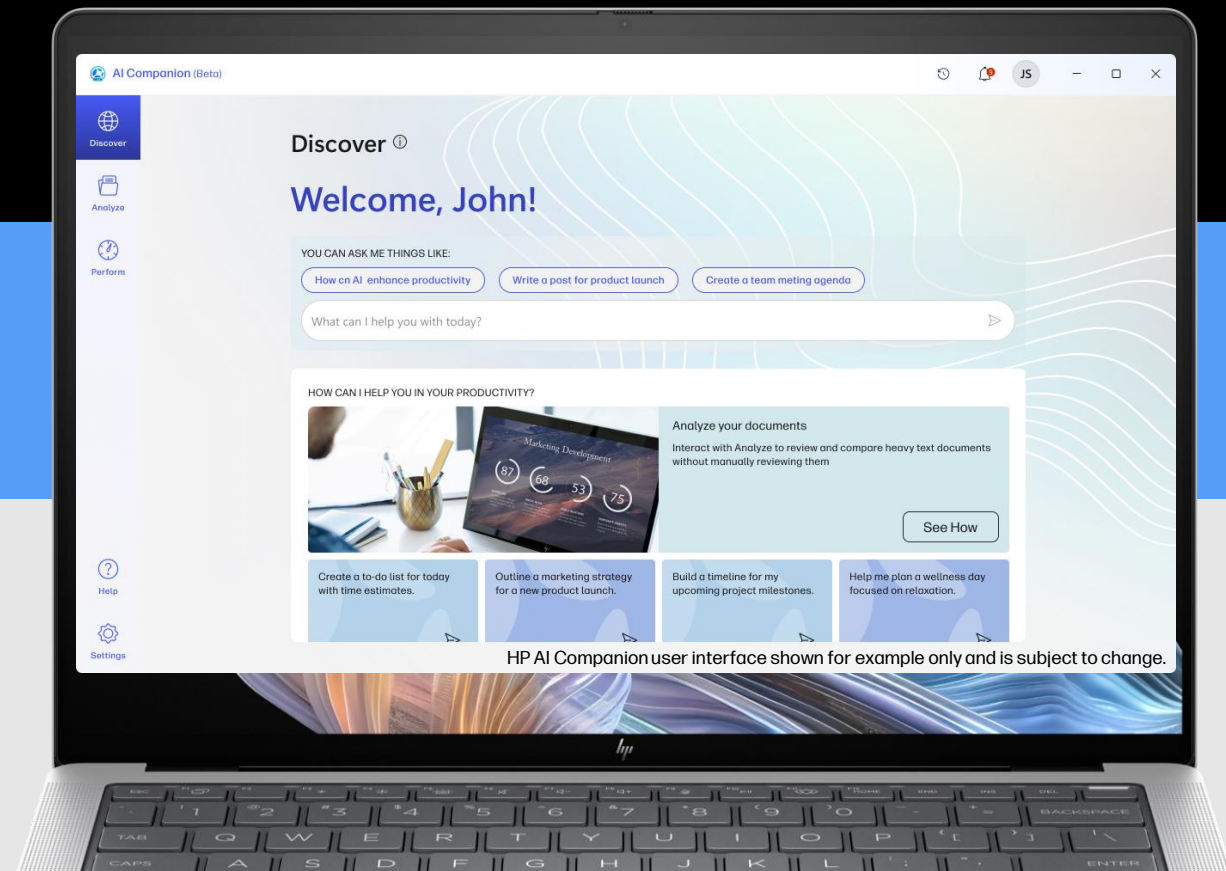
New HP AI-powered solutions



HP Confidential. For use with HP customers under HP CDA only.

AI at your fingertips

Your personal built-in AI Companion¹¹ elevates everyday tasks to keep you performing your best.



HP AI Companion user interface shown for example only and is subject to change.



Discover

Ask, **discover**, and get intelligent assistance



Analyze

Analyze and query your personal files



Perform

NEW

Perform at your best with an HP settings and support assistant¹²



